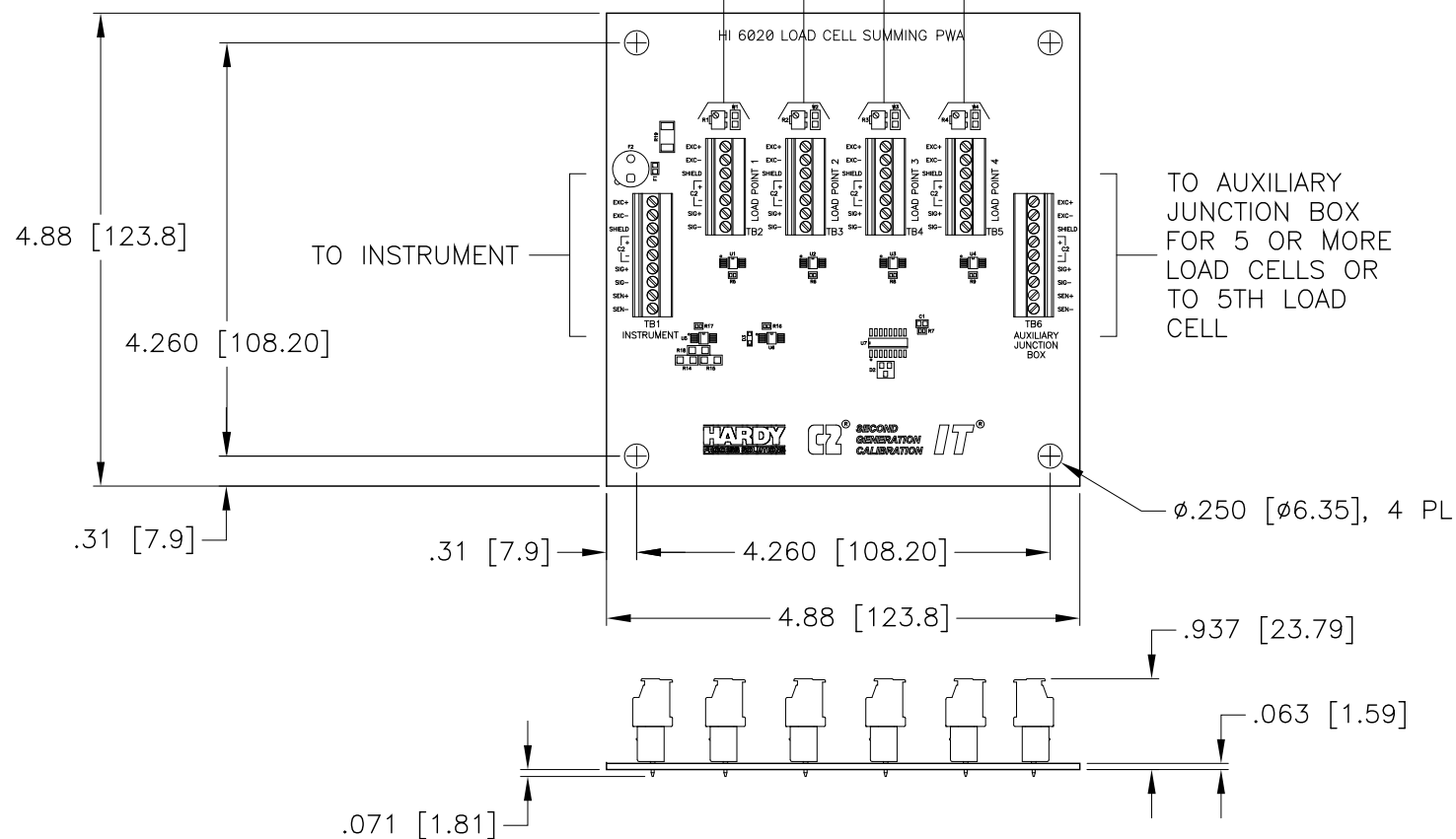


JUNCTION BOX FIELD WIRING

LOAD POINT 2 (LOAD CELL 2)
LOAD POINT 1 (LOAD CELL 1) LOAD POINT 3 (LOAD CELL 3)
LOAD POINT 4 (LOAD CELL 4)



HI 6020IT SERIES LOAD CELL SUMMING CARD

7. SEE SHEET 2 FOR ENCLOSURE MOUNTING DIMENSIONS.

6. OPTIONAL TRIM POTS CAN NOT BE USED WITH C2 OR SOFCAL.

5. REFER TO INSIDE OF JUNCTION BOX COVER FOR GUIDELINES.

4. INSERT C2 LOAD CELL CABLE THROUGH GRIP FITTING AND TIGHTEN ON CABLE AREA MARKED GRIP ZONE. ALIGN END OF GRIP FITTING TO COMPLETELY COVER CABLE GRIP ZONE.

3. THE FOLLOWING PARTS ARE SHIPPED INSIDE JUNCTION BOX AND ARE TO BE INSTALLED IN LOCATIONS REQUIRED BY CUSTOMER:

ITEM	PART NUMBER	QTY	DESCRIPTION
1	0529-0024-01-0	5	CORD GRIP SEALING PLUG (TO BE INSTALLED IN ITEM 3 WHEN APPLICABLE)
2	2814-0095-0	5	1/2 NPT NYLON NUT
3	6007-0097-0	5	1/2 NPT UL TYPE 4X NYLON CORD GRIP, $\phi.17$ [$\phi4.3$] - $\phi.45$ [$\phi11.4$]

2. USE HARDY PROCESS SOLUTIONS PN 6020-0001-0 C2 CERTIFIED LOAD CELL CABLE.

1. REFER TO LOAD CELL CAL SHEET OR WEIGHING ASSEMBLY SELECTION GUIDE FOR LOAD CELL WIRING COLOR CODE.

NOTES: UNLESS OTHERWISE SPECIFIED

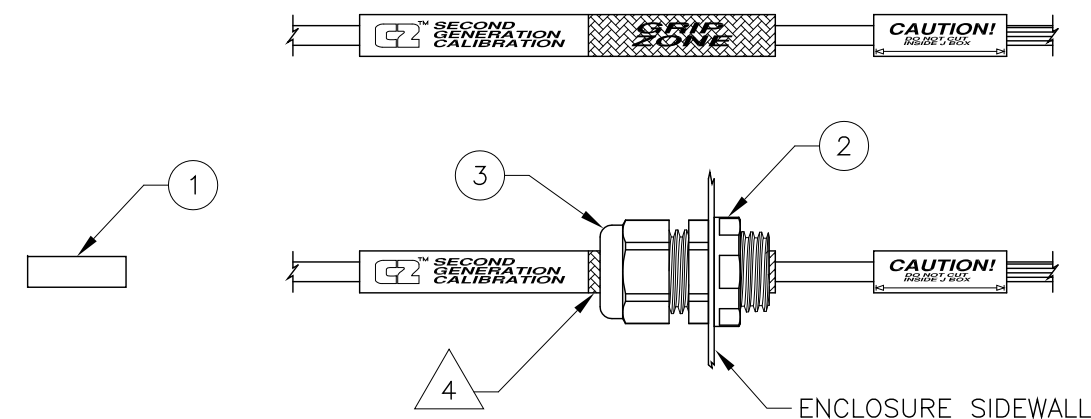
PROPRIETARY NOTICE
ALL DATA AND INFORMATION CONTAINED IN OR DISCLOSED BY THIS DOCUMENT IS CONFIDENTIAL AND PROPRIETARY INFORMATION OF HARDY PROCESS SOLUTIONS INC. AND ALL RIGHTS THEREIN ARE EXPRESSLY RESERVED. BY ACCEPTING THIS MATERIAL THE RECIPIENT AGREES THAT THIS MATERIAL AND THE INFORMATION CONTAINED THEREIN IS HELD IN CONFIDENCE AND IN TRUST AND SHALL NOT BE USED, COPIED, REPRODUCED IN WHOLE OR IN PART, NOR ITS CONTENTS REVEALED IN ANY MANNER TO OTHERS, EXCEPT TO MEET THE SPECIFIC PURPOSE FOR WHICH IT WAS DELIVERED.

REV.	ECO/DDC	DESCRIPTION	DATE	DRAFT	CHECK	APV'D
A	----	RELEASED.	01-18-13	V.J.C.	T.N.	V.J.C.
B	----	REVISED TO SHOW LATEST IT SUMMING CARD DESIGN.	06-02-14	V.J.C.	L.E.G.	V.J.C.
C	11558	REVISED PER ECN.	02-06-15	V.J.C.	L.E.G.	N.H.S.


MODEL NUMBERS 6

HI 6020IT-XXX	DESCRIPTION
SS	STAINLESS STEEL ENCLOSURE
1	WITHOUT TRIM POTS
2	WITH TRIM POTS
PS	PAINTED STEEL ENCLOSURE
1	WITHOUT TRIM POTS
2	WITH TRIM POTS
FG	FIBERGLASS ENCLOSURE
1	WITHOUT TRIM POTS
2	WITH TRIM POTS
SC	IT SUMMING CARD ONLY
1	WITHOUT TRIM POTS
2	WITH TRIM POTS

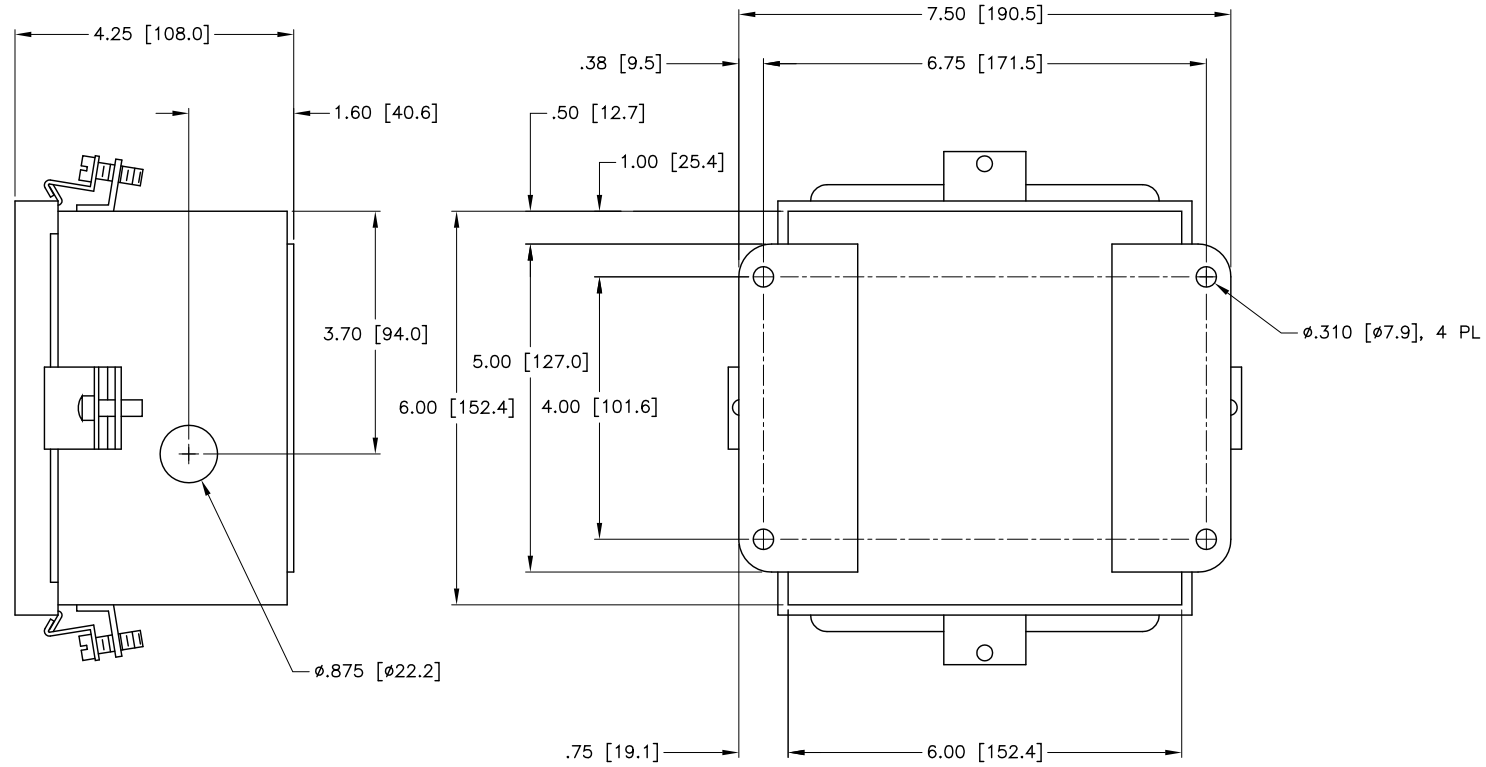
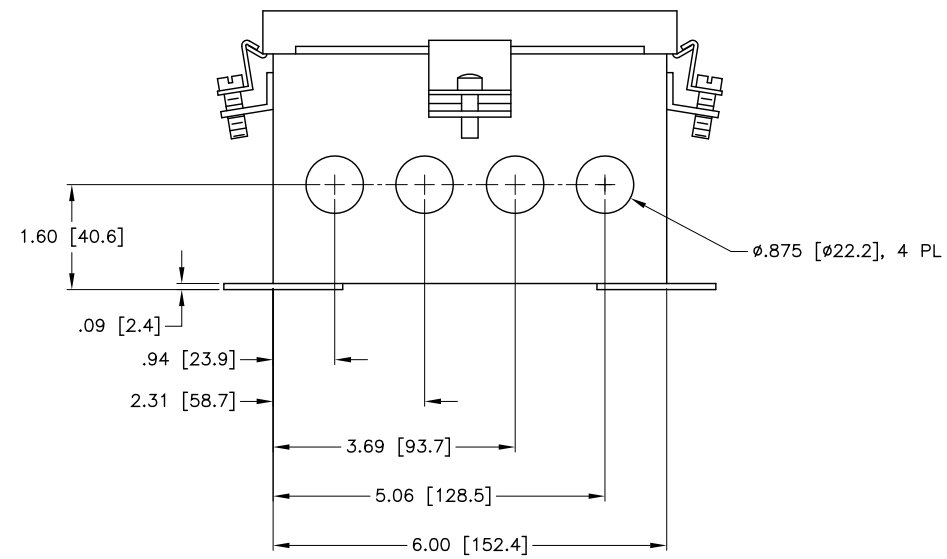
CABLE CONNECTION 3



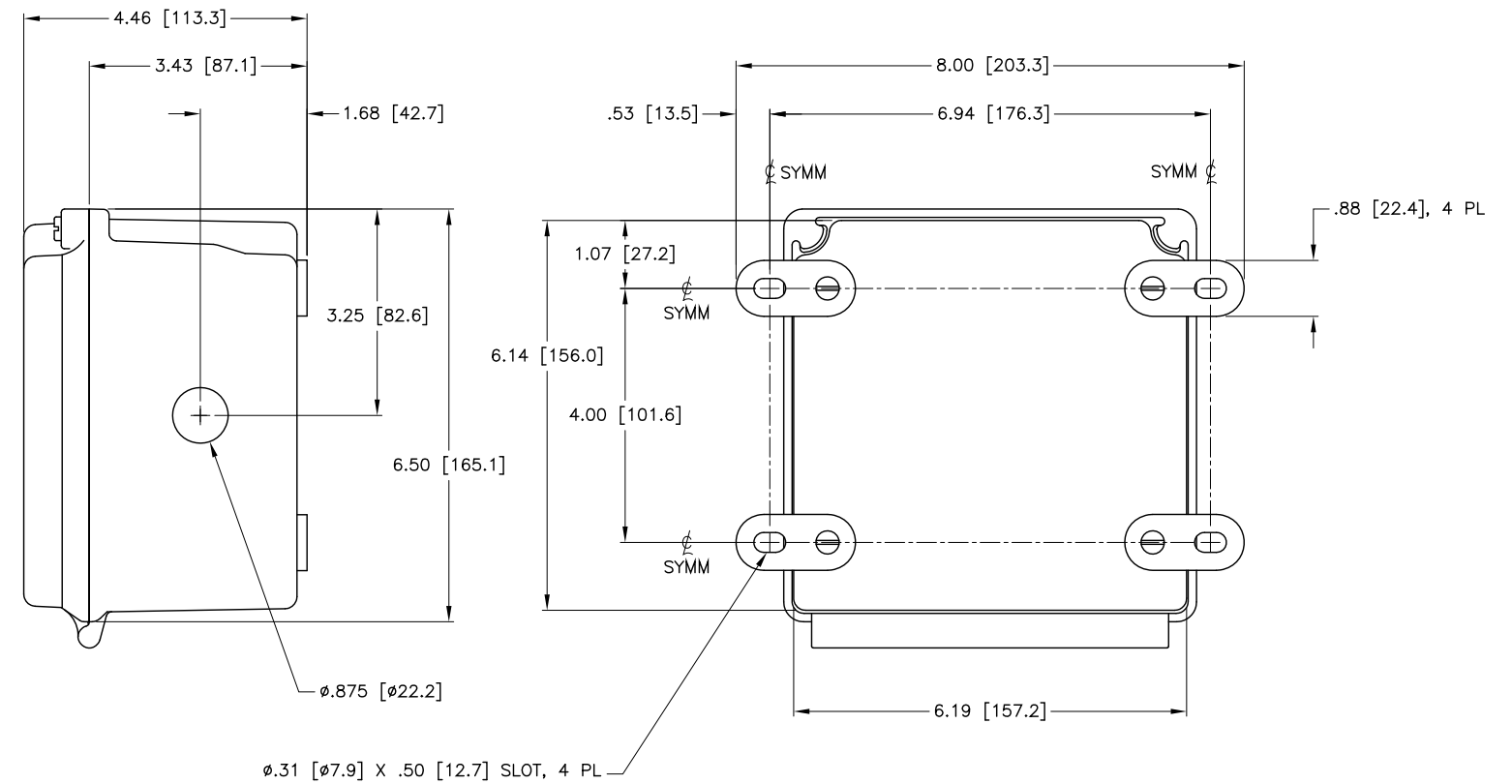
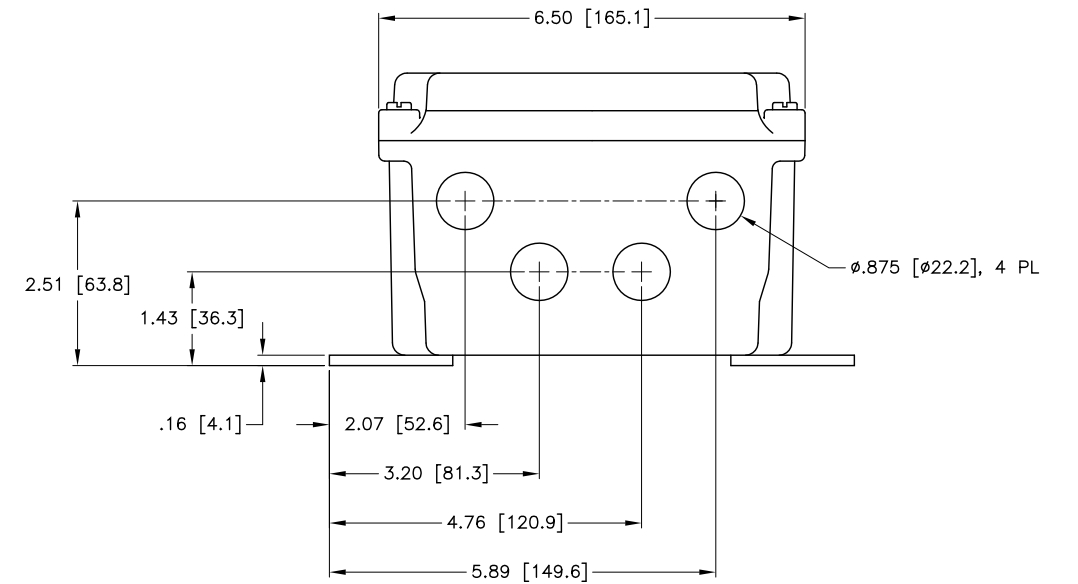
DIMENSIONS IN INCHES [MM]

ITEM	QTY	0584-0081	I/I DIAGRAM, HI 6020IT SERIES		COMMENTS								
ITEM	QTY	PART NUMBER	DESCRIPTION		COMMENTS								
PARTS LIST													
UNLESS OTHERWISE SPECIFIED DIMENSIONS IN INCHES [MM]		CONTRACT NO.		 I/I DIAGRAM, HI 6020IT SERIES									
TOLERANCES:		APPROVALS											
FRACTIONS: N/A		DRAWN	DATE										
DECIMALS: .XX = ± 0.03 [.8]		V. CHULA	01-15-13										
.XXX = ± 0.10 [.25]		CHECKED	DATE	<table border="1"> <tr> <td>SIZE</td> <td>FSCM</td> <td>DRAWING NO.</td> <td>REV.</td> </tr> <tr> <td>D</td> <td>21316</td> <td>0584-0081</td> <td>C</td> </tr> </table>		SIZE	FSCM	DRAWING NO.	REV.	D	21316	0584-0081	C
SIZE	FSCM	DRAWING NO.	REV.										
D	21316	0584-0081	C										
ANGLES: $\pm 0^\circ, 30^\circ$		T. NORMAN	01-18-13										
MATERIAL		APPROVED	DATE										
FINISH		V. CHULA	01-18-13	<table border="1"> <tr> <td>FILE NAME:</td> <td>584081C1.DWG</td> <td>SCALE:</td> <td>NONE</td> <td>SHEET</td> <td>1 OF 2</td> </tr> </table>		FILE NAME:	584081C1.DWG	SCALE:	NONE	SHEET	1 OF 2		
FILE NAME:	584081C1.DWG	SCALE:	NONE			SHEET	1 OF 2						
DO NOT SCALE DRAWING		ISSUED	DATE										
		V. CHULA	01-18-13										
		PRODUCTION	DATE										

HI 6020IT-SS SERIES (STAINLESS STEEL ENCLOSURE)
 HI 6020IT-PS SERIES (PAINTED STEEL ENCLOSURE)



HI 6020IT-FG SERIES (FIBERGLASS ENCLOSURE)



DIMENSIONS IN INCHES [MM]



TITLE			
I/I DIAGRAM, HI 6020IT SERIES			
SIZE	FSCM	DRAWING NO.	REV.
D	21316	0584-0081	C
FILE NAME: 584081C1.DWG		SCALE: NONE	SHEET 2 OF 2