



MASTERSEAL PLUS™

RANGE INTRODUCTION

Masterseal Plus™ has been specifically developed for use in both outdoor and indoor environments, and where wiring devices and accessories would be at risk from penetration by dust or water.

With a rating of IP66*, Masterseal Plus™ offers total protection against dust, and is protected against high pressure jets of water from any direction. Masterseal Plus™ sockets can seal around virtually any standard 13A plug – including moulded on plugs – allowing safe connection for any appliance.

An improved catch eases the opening and closing of the lid, whilst ensuring the integrity of the seal. The gasket is fixed to the mounting frame of the product, enabling rapid installation, and removing the risk of error when placing a floating gasket.

The Masterseal Plus™ range extends to over 90 product variations as the enclosures house selected products from the Logic Plus™ portfolio – thus offering all the benefits of the Logic Plus™ range within the Masterseal Plus™ enclosures.

*Grid Plus enclosures are IP56

FEATURES & BENEFITS

IP66*

Masterseal Plus™ offers total dust ingress protection, and is protected against high-pressure water jets from any direction, when in use.

ROBUST CONSTRUCTION AND TEMPERATURE TOLERANT

Masterseal Plus™ will not discolour, crack or fade in UV light (unlike many other plastics), and will maintain operation in extremes of heat and cold.

IMPACT PROTECTION

Masterseal Plus™ enclosures are made from polycarbonate, one of the toughest thermoplastics available – incidentally also used in products such as motorcycle helmets.

WIDEST RANGE

The Masterseal Plus™ range extends to over 90 product variants. The enclosures house products from the Logic Plus™ range, all enclosures and switches are available in Grey, White and Black.

20 YEAR GUARANTEE

Masterseal Plus™ is guaranteed for an industry-leading 20 years. (10 years for electronic products)



by Honeywell





Technical Hotline
+44 (0)1268 563720

Masterseal Plus™

WIRING DEVICES
INGRESS PROTECTED IP66

ULTIMATE PROTECTION For the Great British Weather



MK Electric has always been at the forefront of technical innovation, not least in the IP environment.

Masterseal Plus™ has been tested to levels well in excess of British Standards. Masterseal Plus™ safeguards users in the harshest of environments, employing a gel seal for improved protection.

With a superb rating of IP66, Masterseal Plus™ is dust-tight to any ingress, and water-tight against high-pressure water jets from any direction.

HOW TO SPECIFY

A range of water and dust tight enclosures, rated at IP66 when in use, manufactured from UV stable thermoplastic material and utilising a gel gasket seal and easy to open catch mechanism.

To enable quick and easy installation the seal will be fixed to the mounting frame of the unit.

Containing a urea moulded anti-bacterial range of wiring accessories, designed with soft curves and chamfered top edges that offer a slim unobtrusive appearance.

Cable connections must be upward facing with easy to identify white markings on a dark background, grouped in a straight line with captive terminal screws for ease of installation.

All standard BS sockets to have a 3 pin operated "child Resistant" shutter system and double pole switching, with the contacts designed such that the neutral makes before and breaks after the live pole for improved safety.

All products to be made in the UK.

Masterseal Plus™

mkelectric.co.uk



IP66
Protection against any particles
of dust and powerful water jets

IMPROVED CATCH
Eases opening and closing

REAR DRILL HOLES
For easier installation

AVAILABLE IN
GREY, WHITE
AND BLACK

FIXED GASKET
SPEEDS
INSTALLATION
and removes risk
of error when
placing a floating
gasket

HAS ALL THE
FEATURES AND
BENEFITS OF THE
LOGIC PLUS™
RANGE

MANUFACTURED FROM
POLYCARBONATE
For impact protection

SEALED IN USE WITH VIRTUALLY
ANY STANDARD 13A PLUG
including moulded on plugs

GEL SEAL
Durable water and dust tight seal
for improved protection



Masterseal Plus™

To view the video visit the
MK Electric by Honeywell
YouTube channel





Technical Hotline
+44 (0)1268 563720

Masterseal Plus™

WIRING DEVICES
INGRESS PROTECTED IP66

Switchsocket Outlets, Timer Socket Outlets, and Key Operated Socket Outlets

13 AMP
IP66



K56486GRY



K56482BLK



K56488GRY



K56485GRY



K56485WHI



K56487GRY



K56301GRY



K56231BLK



K56233WHI



K56480GRY



K56481WHI



K56481BLK



K56483GRY



K56483WHI



K56483BLK

RCD PROTECTED
13 AMP
IP66

Socket Outlets

13 AMP
IP66

16 AMP
IP66
(NON UK)

K56486GRY 1
K56486WHI 1
K56486BLK 1
13A DP
1 GANG SWITCHED
K56482GRY 1
K56482WHI 1
K56482BLK 1
13A DP
2 GANG SWITCHED
K56488GRY 1
K56488WHI 1
K56488BLK 1
13A DP SWITCHED
2 GANG
NEON
CLEAR COVER

Fixing holes are for No.8 woodscrews (not supplied).

K56486 has 4 x 20mm entries, 1 on top, bottom and each side and is supplied with an earth terminal in the back box.

2 gang backbox has 5 cable entries, 2 on top and 1 centrally on other 3 sides. Supplied with earth terminals in backbox.

DIMENSIONS

1 gang 157 x 110 x 89mm
2 gang 157 x 175 x 89mm
BS 1363-2:1995
IP66 BS EN 60529:1992

K56485GRY 1
K56485WHI 1
K56485BLK 1
13A SP
1 GANG
WITH ELECTRONIC
TIMER MODULE
K56487GRY 1
K56487WHI 1
K56487BLK 1
13A 1 GANG DP
KEY OPERATED SOCKET

Timer Module meets the requirements of IEC 60730-1 and IEC 60730-2-7 Standards

K56301GRY 1
K56301WHI 1
K56301BLK 1
1 GANG DP
30mA RATED TRIPPING
CURRENT ACTIVE
CONTROL CIRCUIT
K56231GRY 1
K56231WHI 1
K56231BLK 1
2 GANG SP
30mA RATED TRIPPING
CURRENT ACTIVE
CONTROL CIRCUIT
K56233GRY 1
K56233WHI 1
K56233BLK 1
2 GANG SP
30mA RATED TRIPPING
CURRENT PASSIVE
CONTROL CIRCUIT

RCD protected sockets are pulsating d.c. and a.c. fault current sensitive. Fixing holes are for No.8 woodscrews (not supplied).

Supplied with an earth terminal in the back box. The Sentrysocket has 5 entries. Suitable for supply voltage of 240V a.c.

Standard Shutters.

DIMENSIONS

157 x 175 x 89mm
BS 7288:1990
IP66 BS EN 60529:1992

K56480GRY 1
K56480WHI 1
K56480BLK 1
13A 1 GANG
UNSWITCHED
K56481GRY 1
K56481WHI 1
K56481BLK 1
13A 2 GANG
UNSWITCHED

Fixing holes are for No.8 woodscrews (not supplied).

K56480 has 4 x 20mm entries, 1 on top, bottom and each side and is supplied with an earth terminal in the back box.

BS 1363-2:1995

IP66 BS EN 60529:1992

K56481 Backbox has 5 cable entries, 2 on top and 1 centrally on other 3 sides. Supplied with earth terminals in backbox.

DIMENSIONS

1 gang 157 x 110 x 89mm
2 gang 157 x 175 x 89mm
BS 1363-2:1995
IP66 BS EN 60529:1992

K56483GRY 1
K56483WHI 1
K56483BLK 1
16A
1 GANG
2P+E
UNSWITCHED
(NON UK)

Fixing holes are for No.8 woodscrews (not supplied).

K56483 is for use with plugs having right angled cable exit.

DIMENSIONS

157 x 110 x 89mm
IEC 60884-1:2006
IP66 BS EN 60529:1992

Masterseal Plus™ enclosures are manufactured from polycarbonate. This provides an extremely high level of impact resistance. However some chemicals and synthetic oils can harm polycarbonate. Refer to chemical resistance table on page 553.

Masterseal Plus™

mkelectric.co.uk



Key Operated Switches

20 AMP
IP66



K56425GRY



K56425WHI



K56425BLK

Connection Units

13 AMP
IP66



K56410WHI



K56410BLK



K56410GRY

Switches

10 AMP
IP66



K56400GRY



K56401WHI



K56402BLK

10 AMP
IP66



K56406GRY



K56407BLK



K56408WHI

20 AMP
IP66



K56409GRY



K56409WHI



K56409BLK

Grid Plus Enclosures

IP56



K56414GRY



K56414WHI



K56414BLK

K56425GRY 1
K56425WHI 1
K56425BLK 1
20A
1 GANG
DP KEY OPERATED SWITCH

Fixing holes are for No.8 woodscrews (not supplied).
K56425 Backbox has 4 x 20mm entries, 1 on top, bottom and each side and is supplied with an earth terminal in the back box.
DIMENSIONS
160 x 117 x 89mm
BS EN 60669-1:1999
IP66 BS EN 60529:1992

K56410GRY 1
K56410WHI 1
K56410BLK 1
13A DP
1 GANG
SWITCHED, FUSED

Fitted with a 13A fuse link to BS 1362.
Fixing holes are for No.8 woodscrews (not supplied).
Backbox has 4 x 20mm entries, 1 on each edge, and is supplied with an earth terminal in the backbox.
DIMENSIONS
160 x 117 x 89mm
BS 1363-4:1995
IP66 BS EN 60529:1992

K56400GRY 1
K56400WHI 1
K56400BLK 1
10A 1 GANG
SP ONE-WAY
K56401GRY 1
K56401WHI 1
K56401BLK 1
10A 1 GANG
SP TWO-WAY
K56402GRY 1
K56402WHI 1
K56402BLK 1
10A 2 GANG
SP ONE-WAY

K56406GRY 1
K56406WHI 1
K56406BLK 1
10A 1 GANG
DP ONE-WAY
K56407GRY 1
K56407WHI 1
K56407BLK 1
10A 1 GANG
SP TWO-WAY
PUSH TO MAKE OR
PUSH TO BREAK
'BELL'
K56408GRY 1
K56408WHI 1
K56408BLK 1
10A 1 GANG
SP TWO-WAY
PUSH TO MAKE OR
PUSH TO BREAK
'PRESS'

K56409GRY 1
K56409WHI 1
K56409BLK 1
20A 1 GANG
DP ONE-WAY
'PRESS'

Fixing holes are for No.8 woodscrews (not supplied).
Each switch is fitted with a neon which can be wired as a locator.
The enclosure has 4 x 20mm entries, 1 on top, bottom and each side and is supplied with an earth terminal and a loop terminal in the back box.
DIMENSIONS
95 x 95 x 57mm
BS EN 60669-1:1999
IP66 to BS EN 60529:1992

K56414GRY 1
K56414WHI 1
K56414BLK 1
MODULAR GRID PLUS ENCLOSURE SUPPLIED WITH 1 AND 2 GANG INSERTS*

Fixing holes are for No.8 woodscrews (not supplied).
Backbox has 4 x 20mm entries, 1 on top, bottom and each side. Supplied with an earth terminal and a loop terminal in the backbox.
DIMENSIONS
95 x 95 x 80mm
BS EN 60669-1:1999
IP56 to BS EN 60529:1992

Fixing holes are for No.8 woodscrews (not supplied).
Each switch is fitted with a neon which can be wired as a locator.
The enclosure has 4 x 20mm entries, 1 on top, bottom and each side and is supplied with an earth terminal and a loop terminal in the back box.
These switches (except push switches) do NOT have to be derated when used with fluorescent or inductive loads.

DIMENSIONS
95 x 95 x 57mm
BS EN 60669-1:1999
IP66 to BS EN 60529:1992

* NOTE: Installers may select any switch or neon modules, excluding dimmers, from Grid Plus range and configure product to suit installation requirements.



Technical Hotline
+44 (0)1268 563720

Masterseal Plus™

WIRING DEVICES
INGRESS PROTECTED IP66

Switch Enclosures

IP66



K56420GRY



K56421WHI



K56422BLK



K56422GRY

Switch Modules

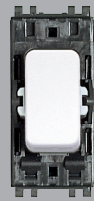
10 AMP



56881BLK



56882BLK

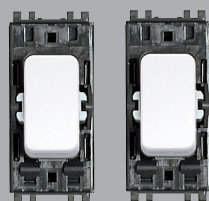


56883BLK

20 AMP



56891BLK



56892BLK 56893BLK



56896BLK

Neon Modules



56889RED

Data/Telecom Enclosures Euro Format

IP66



K56423GRY



K56423WHI



K56423BLK

Euro Data Modules

TELECOM



K5820WHI



K5821WHI



K5820BLK



K5821BLK

- K56420GRY** 1
- K56420WHI** 1
- K56420BLK** 1
- 1 GANG FOR USE WITH ANY ONE SWITCH MODULE
- K56421GRY** 1
- K56421WHI** 1
- K56421BLK** 1
- 1 GANG WITH NEON FOR USE WITH ANY SWITCH AND ANY NEON MODULE
- K56422GRY** 1
- K56422WHI** 1
- K56422BLK** 1
- 2 GANG FOR USE WITH ANY TWO SWITCH MODULES

Fixing holes are for No.8 woodscrews (not supplied). Each enclosure is fitted with a neon which should be wired as a locator. The enclosure has 4 x 20mm entries, 1 on top, bottom and each side and is supplied with an earth terminal and a loop terminal in the back box.

NOTE

These enclosures are for use with the Masterseal Plus™ switch and neon modules.

DIMENSIONS

95 x 95 x 57mm
IP66 to BS EN 60529:1992

- 56881BLK** 10
 - 10A SP ONE-WAY
 - 56882BLK** 10
 - 10A SP TWO-WAY
 - 56883BLK** 10
 - 10A DP ONE-WAY
- For use only with Masterseal Plus™ switch enclosures.
These switches do NOT have to be derated when used with fluorescent or inductive loads.
BS EN 60669-1:1999

- 56891BLK** 10
 - 20A SP ONE-WAY
 - 56892BLK** 10
 - 20A SP TWO-WAY
 - 56893BLK** 10
 - 20A INTERMEDIATE
 - 56896BLK** 10
 - 20A DP ONE-WAY
- For use only with Masterseal Plus™ switch enclosures.
These switches do NOT have to be derated when used with fluorescent or inductive loads.
BS EN 60669-1:1999

- 56889RED** 10
 - 200-250V NEON RED
- BS 5733: 2010

- K56423GRY** 1
- K56423WHI** 1
- K56423BLK** 1
- 1 GANG DATA ENCLOSURE FOR 2 MODULE EURO OUTLET

2 data modules can be accommodated providing care is used to ensure that the cables are correctly routed through the outlet.
Fixing holes are for No.8 woodscrews (not supplied). Backbox has 4 x 20mm entries, 1 on each edge. Supplied with an earth terminal and a loop terminal in the backbox.

DIMENSIONS

160 x 117 x 89mm
IP66 to BS EN 60529:1992

- K5820WHI** 5
- K5820BLK** 5
- TELEPHONE MASTER ONE MODULE
- K5821WHI** 5
- K5821BLK** 5
- TELEPHONE SECONDARY ONE MODULE

DIMENSIONS
25 x 50mm
BS 6312-2

See Logic Plus page 46-48 for a full range of Euro modules

Masterseal Plus™

mkelectric.co.uk



Euro Data Modules

DATA



K5844WHI

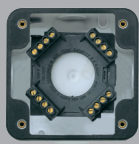


K5887WHI K5887BLK

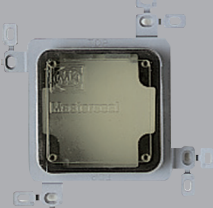
Junction Boxes

30 AMP
IP66

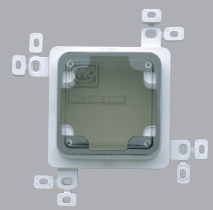
K56506GRY

K56506WHI
(COVER ON)K56506WHI
(COVER OFF)

Flush Mounting Frames



K56500GRY



56500WHI



K56501GRY

Flush Mounting Bezels



K56502GRY



56502WHI



K56503GRY

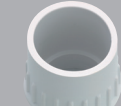
Conduit Entries



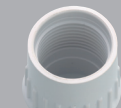
56460WHI



56461WHI



56462WHI



56463WHI



56464WHI

Accessories



MK9933



56890GRN

K5844WHI 5
RJ45 CAT 5e
ANGLED UNSCREENED
ONE MODULE

K5887WHI 5
K5887BLK 5
RJ11/12
ONE MODULE

K5844
Enhanced Cat 5e performance.
Suitable for both 568A and
568B wiring schemes.

ISO/IEC 11801
EN 50173
TIA 568
EN 41003

K5887
Suitable for both RJ11 and
RJ12 jacks
RJ11 4 wire
RJ12 6 wire

FCC68
EN 41003

DIMENSIONS
25 x 50mm

See Logic Plus
page 46-48 for a
full range of
Euro modules

K56506GRY 1
K56506WHI 1
K56506BLK 1
JUNCTION BOX
WITH FOUR
4-WAY TERMINALS

Fixing holes are for No. 8
woodscrews (not supplied).
The enclosure has 4 entries, 1
on top, bottom and both sides.

TERMINAL CAPACITY
Each terminal block accepts
four 2.5mm² cables.

DIMENSIONS
95 x 95 x 65mm
BS 6220:1983
IP66 to BS EN 60529

K56500GRY 1
K56500WHI 1
1 GANG
PLASTER/TILE FLUSH
MOUNTING FRAME WITH
PROTECTIVE COVER
FOR USE WITH
160 X 117MM PRODUCTS

56500GRY 1
56500WHI 1

1 GANG
PLASTER/TILE FLUSH
MOUNTING FRAME WITH
PROTECTIVE COVER
FOR USE WITH
95 X 95MM SWITCHES

K56501GRY 1
K56501WHI 1

2 GANG
PLASTER/TILE FLUSH
MOUNTING FRAME WITH
PROTECTIVE COVER

The Flush adaptors for plaster
and tile can be used with finish
depths up to 20mm, by using
the spacers provided. Allows
flush mounted Masterseal
Plus™ products to maintain
their IP rating.
Can be used with side entry or
back entry enclosures.

DIMENSIONS
56500 115 x 115 x 34mm
K56500 135 x 135 x 34mm
K56501 135 x 195 x 34mm

K56502GRY 1
K56502WHI 1
1 GANG
FLUSH MOUNTING
BEZEL FOR USE WITH
160 X 117MM PRODUCTS

56502GRY 1
56502WHI 1

1 GANG
FLUSH MOUNTING
BEZEL FOR USE WITH
95 X 95MM SWITCHES

K56503GRY 1
K56503WHI 1

2 GANG
FLUSH MOUNTING BEZEL

The Flush adaptors for brick
and cavity walls should be
used on vertical surfaces
where no additional finishing,
such as plastering is required.
Allows flush mounted
Masterseal Plus™ products to
maintain their IP rating.

Can only be used with back
entry enclosures.
Supplied with 4 self tapping
screws to fix enclosure to
mounting bezel.

Clip-on surround hides
mounting screws.

DIMENSIONS
56502 145 x 145 x 41mm
K56502 165 x 165 x 41mm
K56503 165 x 245 x 41mm

56460GRY 5
56460WHI 5
ENTRY BLANK

56461BLK 5
56461WHI 5
PVC CABLE ENTRY
TO PROVIDE DIRECT
ENTRY OF POWER CABLE
TO THE UNIT VIA THE
BOTTOM BOX ENTRY

56462WHI 5
20MM PLAIN CONDUIT
ENTRY PUSH FIT
ADAPTOR BETWEEN
BACK BOX AND 20MM
PLAIN CONDUIT

56462BLK 5
56462WHI 5

20MM THREADED
CONDUIT ENTRY PUSH
FIT ADAPTOR BETWEEN
BACK BOX AND 20MM
THREADED CONDUIT

56463BLK 5
56463WHI 5

20MM THREADED
CONDUIT ENTRY PUSH
FIT ADAPTOR BETWEEN
BACK BOX AND 20MM
THREADED CONDUIT

56464BLK 5
56464WHI 5

BOX COUPLER
FOR GANGING ONE
MASTERSEAL PLUS™
BOX NEXT TO ANOTHER

MK9933 1
M20 EARTH LEAD
ADAPTOR FOR EARTHING
METAL CONDUIT

56890GRN 5
REPLACEMENT
NEON LOCATOR



Technical Hotline
+44 (0)1268 563720

Masterseal Plus™

Echo™ is an innovative range of entirely wireless, batteryless and self-powered switches, only available from MK Electric

1 and 2 Channel Transmitter For Echo™

Enclosure

IP66

IP66



WIRELESS



BATTERYLESS



SELF-POWERED



K55400GRY



K55000GRY



K55406WHI



K55406BLK

WIRELESS

No wires offers the benefits of almost instant switch installation and total location flexibility, resulting in reduced costs and disruption as well as improved speed and ease of installation – invaluable for areas needing to rearrange space periodically, e.g. commercial offices, or those where the channelling of walls isn't permissible or feasible, such as historic buildings or glass partition walls.

BATTERYLESS

No batteries means low maintenance and low running costs. No need to buy, fit, replace or dispose of batteries, eliminating nuisance and waste for a more sustainable option.

SELF-POWERED

The new Echo™ range works by harvesting tiny amounts of ambient energy which power a switch (Transmitter) to send an RF signal to the Switch Receiver which is connected to the lighting circuit – operating lighting at ranges of up to 30 metres within typical buildings.

K55400GRY	1	K55000GRY	1
K55400WHI	1	K55000WHI	1
K55400BLK	1	K55000BLK	1
1 CHANNEL TRANSMITTER FOR ECHO™			

K55406GRY	1
K55406WHI	1
K55406BLK	1
2 CHANNEL TRANSMITTER FOR ECHO™	

See page 29 for a full range of Echo™ receivers and accessories

No wires

- Instant switch installation
- Location/relocation flexibility
- Simplifies office 'churn' – less disruption

No batteries

- Low maintenance
- Low running costs
- Less waste, a more sustainable option
- No nuisance factor

Flexibility

- No wires, no constraints
- Suitable for all wall types, including where channelling isn't feasible
- Ideal for commercial, residential and historic buildings

Quality reliability and safety come as standard
10 year guarantee