

Rittal – The System.

Faster – better – everywhere.

► Small enclosures KX Terminal box KX, sheet steel, without gland plate – KX 1512.000

Date : Jan 25, 2020

ENCLOSURES

POWER DISTRIBUTION

CLIMATE CONTROL

IT INFRASTRUCTURE

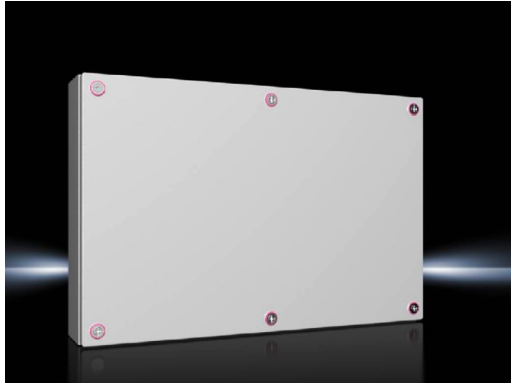
SOFTWARE & SERVICES

FRIEDHELM LOH GROUP



Small enclosures KX Terminal box KX, sheet steel, without gland plate – KX 1512.000

created: 25.01.2020 build on www.rittal.com/uk-en



Product description

Description:	The small enclosure KX, terminal box KX, without a gland plate allows for flexible interior installation while maintaining a high protection category.
Material:	Enclosure: Sheet steel Cover: Sheet steel, all-round foamed-in PU seal
Surface finish:	Enclosure and cover: Dipcoat primed, powder-coated on the outside, textured paint
Colour:	RAL 7035
Protection category IP to IEC 60 529:	IP 66
Protection category NEMA:	NEMA 4
Type rating to UL 508A:	Type 3R/4
IK Code:	IK08
Supply includes:	Enclosure with cover Mini cam lock
Basic material:	Sheet steel

Product features

Dimensions:	Width: 600 mm Height: 400 mm
--------------------	---------------------------------

Depth: 120 mm

Material thickness:	Enclosure: 1.25 mm Cover: 1.25 mm
Packs of:	1 pc(s).
Weight/pack:	8.35 kg
EAN:	4028177816268
Customs tariff number:	85389099
ETIM 7.0:	EC002713
ETIM 6.0:	EC002713
eCl@ss 8.0/8.1:	27180101
eCl@ss 6.0/6.1:	27180101
Product description:	KX Terminal box, WHD: 600x400x120 mm, sheet steel, without mounting plate, with cover, without gland plate
Approvals	
Approvals:	UL + C-UL