

□

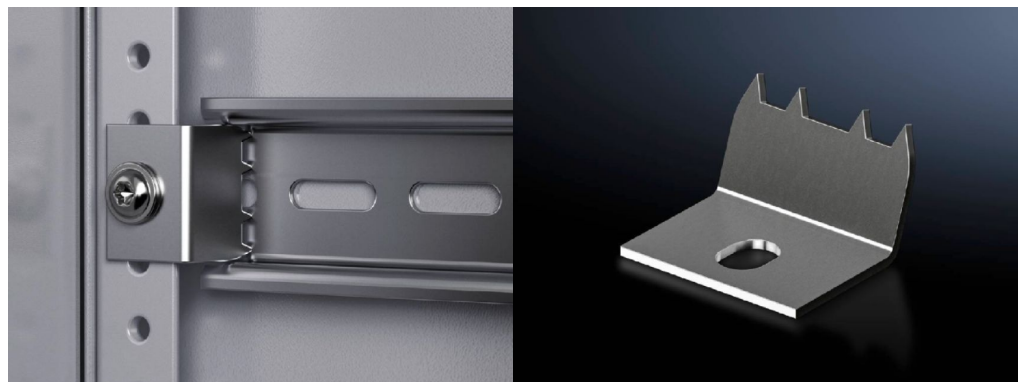
Mounting claw for second mounting level for terminal box KX, bus enclosure KX – KX 2309.100

Date : Apr 3, 2020

□

Mounting claw for second mounting level for terminal box KX, bus enclosure KX – KX 2309.100

: 03.04.2020 build on www.rittal.com/uk-en



Product description

Description: For fixing top hat rails directly onto the rear panel of KX terminal boxes and KX bus enclosures. Creates an additional mounting level with an extra 10 mm of installation depth without having to machine the enclosure.

Product features

To fit: Enclosure type: Terminal box KX
Enclosure type: Bus enclosure KX

Packs of: 20 pc(s).

Copper weight (kg per piece): 0

EAN: 4028177938106

Customs tariff number: 83024900

ETIM 7.0: EC002625

ETIM 6.0: EC002625

eCl@ss 8.0/8.1: 27189234

eCl@ss 6.0/6.1: 27189234

Product description: KX Mounting claw for second mounting level, for terminal boxes KX and bus enclosures KX

