

Rittal – The System.

Faster – better – everywhere.

Protective roof for AX – AX 2473.010

Date : Jan 25, 2020

ENCLOSURES

POWER DISTRIBUTION

CLIMATE CONTROL

IT INFRASTRUCTURE

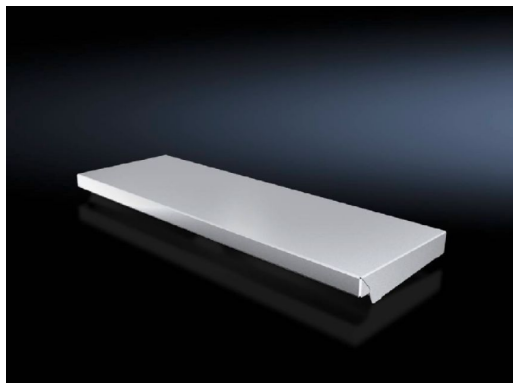
SOFTWARE & SERVICES

FRIEDHELM LOH GROUP



Protective roof for AX – AX 2473.010

created: 25.01.2020 build on www.rittal.com/uk-en



Product description

Description:	The sloping protective roof reliably protects the enclosure from standing moisture and other soiling from above. It can be attached to the enclosure without any machining.
Material:	Stainless steel 1.4301 (AISI 304)
Surface finish:	Brushed, grain 240
Supply includes:	Assembly parts

Product features

To fit:	Enclosure type: AX Width: = 600 mm Depth: = 210 mm
Dimensions:	Height: 37 mm
Packs of:	1 pc(s).
Copper weight (kg per piece):	0
EAN:	4028177938236
Customs tariff number:	94039010
ETIM 7.0:	EC000744
ETIM 6.0:	EC000744

eCl@ss 8.0/8.1:	27182405
eCl@ss 6.0/6.1:	27182405
Product description:	AX Prot. roof, for WD: 600x210 mm, stainless steel
