

# Rittal – The System.

Faster – better – everywhere.

► **Base/plinth corner piece with base/plinth trim panels, front and rear, 200 mm for VX, VX IT, VX SE, TE, TS, TS IT, SE, CM, TP, PC, IW – VX 8640.025**

Date : Mar 2, 2021

ENCLOSURES

POWER DISTRIBUTION

CLIMATE CONTROL

IT INFRASTRUCTURE

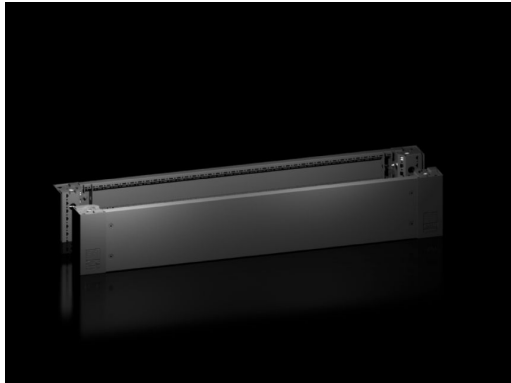
SOFTWARE & SERVICES

FRIEDHELM LOH GROUP



# Base/plinth corner piece with base/plinth trim panels, front and rear, 200 mm for VX, VX IT, VX SE, TE, TS, TS IT, SE, CM, TP, PC, IW – VX 8640.025

created: 02.03.2021 build on [www.rittal.com/uk-en](http://www.rittal.com/uk-en)



## Product description

**Description:** Heavy-duty base/plinth corner pieces with moulded self-positioning to the enclosure, may be used with or without trim panels depending on the application. Large openings in the base/plinth corner piece for optimum access to the screw-fastening point, may be concealed with a plastic corner and baying cover.

**Material:** Base/plinth corner piece: Sheet steel  
Base/plinth trims: Sheet steel  
Corner and baying cover: Plastic

**Colour:** RAL 9005

**Supply includes:** 4 base/plinth corner pieces, 200 mm high  
4 corner covers  
1 baying cover  
1 base/plinth trim panel, front/rear, 200 mm high  
2 base/plinth trim panels, front/rear, 100 mm high  
Assembly parts

**Note:** Base/plinth trim panels, sides to finish off a unit, for additional stabilisation between base/plinths, or for interior configuration

## Product description

**To fit:** Width: = 1200 mm

**Dimensions:** Height: 200 mm

**Packs of:** 2 pc(s).

<b>Weight/pack:</b>	12 kg
<b>Copper weight (kg per piece):</b>	0
<b>EAN:</b>	4028177958890
<b>Customs tariff number:</b>	94039010
<b>ETIM 7.0:</b>	EC000721
<b>ETIM 6.0:</b>	EC000721
<b>eCl@ss 8.0/8.1:</b>	27182003
<b>eCl@ss 6.0/6.1:</b>	27182003
<b>Product description:</b>	VX Base/plinth corner piece, with base/plinth trim panel, front and rear, H: 200 mm, for W: 1200 mm, sheet steel
<b>Approvals</b>	
<b>Approvals:</b>	UL + C-UL
<b>Certificates:</b>	NA