

# Rittal – The System.

Faster – better – everywhere.

## ► Base/plinth trim panels, side, 100 mm for base/plinth system VX, sheet steel – VX 8640.032

Date : Mar 2, 2021

ENCLOSURES

POWER DISTRIBUTION

CLIMATE CONTROL

IT INFRASTRUCTURE

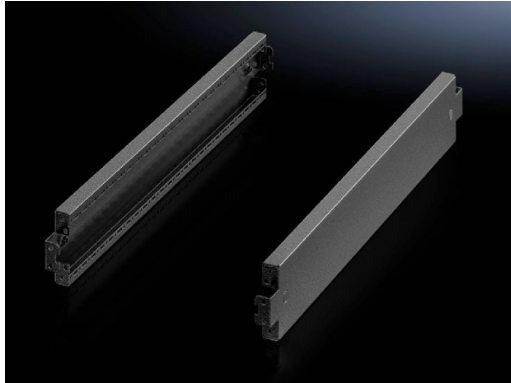
SOFTWARE & SERVICES

FRIEDHELM LOH GROUP



# Base/plinth trim panels, side, 100 mm for base/plinth system VX, sheet steel – VX 8640.032

created: 02.03.2021 build on [www.rittal.com/uk-en](http://www.rittal.com/uk-en)



## Product description

<b>Description:</b>	To finish off a base/plinth unit at the sides and for additional stability, or for the interior installation of bayed base/plinths. One 200 mm high or two 100 mm high trim panels may optionally be fitted on 200 mm high base/plinths.
<b>Material:</b>	Sheet steel
<b>Colour:</b>	RAL 9005
<b>Supply includes:</b>	Assembly parts

## Product description

<b>To fit:</b>	Depth: = 500 mm
<b>Dimensions:</b>	Height: 100 mm
<b>Packs of:</b>	2 pc(s).
<b>Weight/pack:</b>	1.36 kg
<b>Copper weight (kg per piece):</b>	0
<b>EAN:</b>	4028177958944
<b>Customs tariff number:</b>	94039010

**ETIM 7.0:** EC000721

---

**ETIM 6.0:** EC000721

---

**eCl@ss 8.0/8.1:** 27182003

---

**eCl@ss 6.0/6.1:** 27182003

---

**Product description:** VXBase/plinth trim panel, side, H: 100 mm, for D: 500 mm, sheet steel

---

## **Approvals**

---

**Approvals:** UL + C-UL

---